



QA Software



Microsoft Partner

Gold Independent Software Vendor (ISV)

Project Management the smart way

Defect Inspector

Inspection and Defect Management System for Projects



Defect Management at your Finger-tips

3
Easy steps
TO SIMPLE, EFFECTIVE DEFECT MANAGEMENT

1. Record defects using a Tablet PC or Mobile Phone
2. Import defects to Office PC
3. Email or Fax to Sub-Contractor for fixing!



Manage Defects with **Defect Inspector**

Defect Inspector

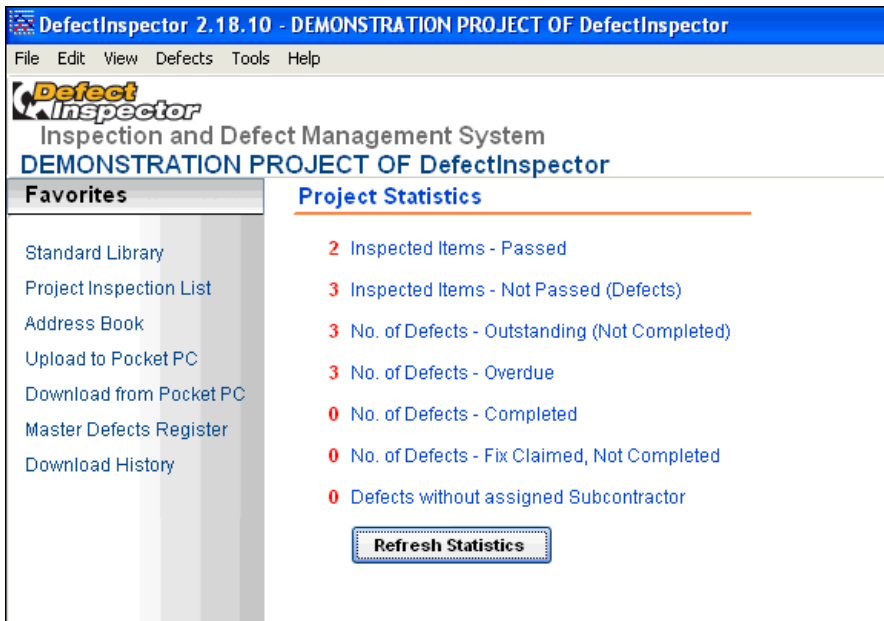
Information Management Solutions for the Construction Industry

Defect management at your Finger-tips

Introduction

The **Defect Inspector** Inspection and Defects Management System is undoubtedly the most powerful Defects management application on the market today.

Using a combination of Defect Inspector on the PC to quickly create comprehensive and detailed Inspection check lists, and Defect Inspector on the Handheld device such as a Tablet PC or a mobile phone to capture inspection results remotely from the office, Defect Inspector transforms the way companies manage defects.



Inspections are performed using Defect Inspector with minimal requirement for training yet comprehensive inspection results are achieved via rules to ensure inspections are performed in a specific sequence, costs are estimated, and responsible subcontractors are assigned to defects.

With fast synchronisation between PC and handheld devices and the auto emailing of inspection lists to responsible parties, Defect Inspector delivers a great return on investment by increasing productivity and providing staff with the information to effectively manage the defects problem that occurs on all projects.

Summary

How Defect Inspector Benefits Management	
>	Standardise the way you manage defects with a simple system.
>	Email/Fax defects lists to Sub-Contractors and record fixes.
>	Use a single Handheld device for multiple projects.
>	Administer inspection and defects lists from many sources.
>	Record and minimise the Cost of Defects.
>	Expedite the completion of your projects and avoid post completion nightmares!

How Defect Inspector helps Inspectors	
>	Setup Standard Inspection Lists conveniently using the office computer and then access them from the handheld device.
>	Quickly and effortlessly record defects ON-SITE using Handheld devices.
>	Record Accepted work as well as defects.
>	Assign responsible Sub-Contractors to rectify defects with required by dates.
>	Take photos of defects with your Handheld device and even mark up drawings highlighting the problem areas.
>	Monitor and Expedite fixes to defects.

Defect Inspector

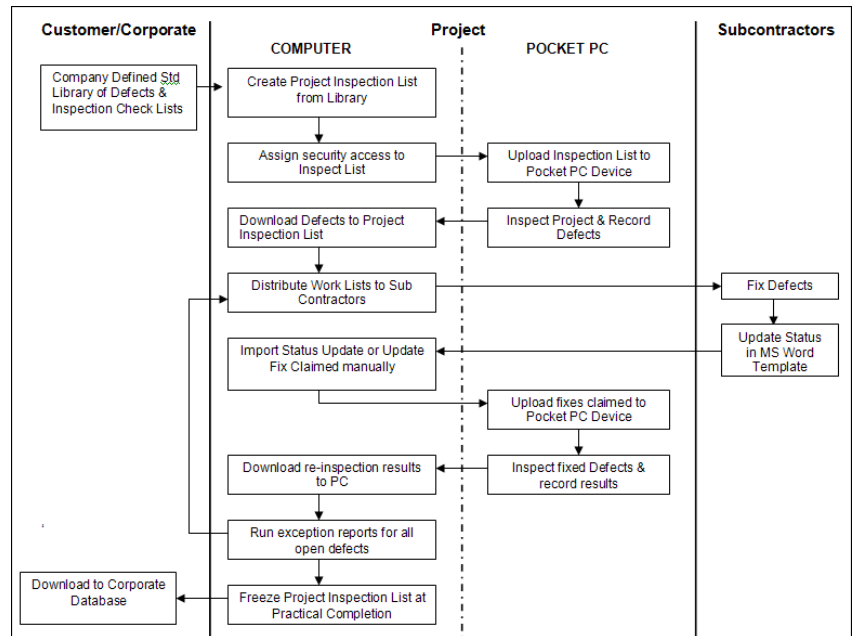
Information Management Solutions for the Construction Industry

Defect management at your Finger-tips

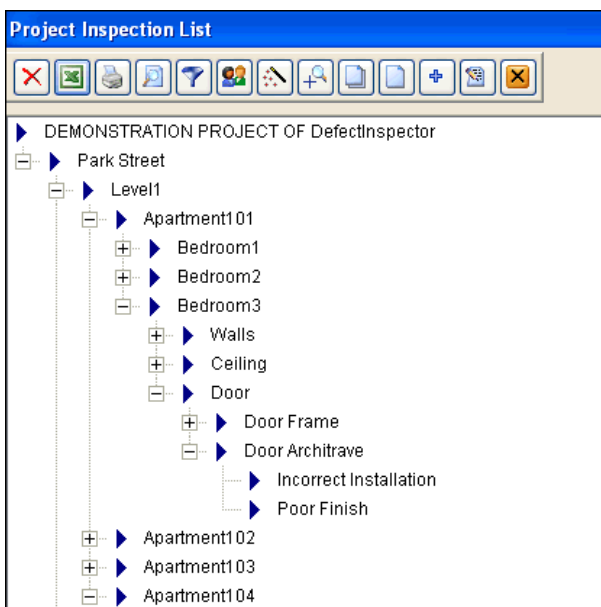
Business Process

Defect Inspector has a clearly defined work flow:

- » Creating a **Project Inspection List**.
- » Assigning **access** for inspectors to the Project Inspection List.
- » **Uploading** the Project Inspection List to the Handheld device.
- » **Performing Inspections** with the Handheld device and recording the results.
- » **Downloading** the Inspection results to the PC.
- » **Sending Defects Lists** to Subcontractors.
- » Updating the Defects List when Subcontractors notify **rectification is completed**.
- » **Performing Re-Inspections** of Fix Claimed items and marking those fixed as Complete.
- » **Expediting** of outstanding Defects.



The Project Inspection List



The Project Inspection and Check List in Defect Inspector is a configurable multilevel work break down structure defining the elements of the projects to be inspected and the possible defects that could occur.

An example Work break down structure for a building project will be:

- Building
- Area
- Location
- Room
- Item
- Sub Item
- Defect

The ability to define the WBS in a hierarchy means that project inspections are carried out comprehensively and inspectors can be forced via Defect Inspector to:

- » Inspect all Items in a Room in particular sequence
- » Assign responsible contractors to rectify defects
- » Enter estimated costs

Defect Inspector

Information Management Solutions for the Construction Industry

Defect management at your Finger-tips

Using a Handheld device for Inspections

Defect Inspector supports capture of Inspection results either by direct entry on the PC or, more commonly by the use of a Handheld device such as a Tablet PC or a mobile phone.

Project Inspection Lists are uploaded from the PC to the Handheld and the inspector records their inspection results (Passed and Not Passed) as they move through the building or site.

Defect Inspector on the Handheld device supports:

- Super fast capture of items that have passed inspection.
- Simply entry of defect details.
- Assignment of one or more responsible subcontractors for rectification.
- Use of estimated costs and required by dates.
- Use of a camera and sketch pad to visually record defects.
- Use of design drawings to pinpoint the location of defects.
- Copying of Inspection results from one room to another.
- Filtering of items requiring re-inspection.
- Ability to close out defects once completed.
- Storage of Inspection lists for multiple projects on single device.



Sending Defects Lists to Subcontractors

DefectInspector Subcontractor Defect Notice

Notification No.	N/A
Project No.	DEMO
Project Title.	DEMONSTRATION PROJECT OF DefectInspector
CompanyID (Subcontractor)	+ALL
Company	+ALL
Inspector Company	+ALL
Date sent	29/10/2008
Responded (Date)	

No	Location1	Location2	Comments (Defects)	Date Due DD/MM/YY	Date Fixed DD/MM/YY	Comments
3	Park Street, Level1, Apartment 104	Study, Door, Door Frame, N/A, N/A	Cracked Wood	04/10/04		

Once inspection is completed, they are downloaded from the Handheld device to Defect Inspector on the PC. Defect lists by subcontractor, can then be emailed directly from Defect Inspector to each responsible company.

Defect Inspector includes the option to send defect lists either in PDF or MS Word format. The MS Word format is a unique template that allows the subcontractor to enter the progress of their rectification works which in turn can be imported back into Defect Inspector to update the status of defects.

Once the subcontractor claims they have fixed the defects they are responsible for and the status in Defect Inspector has been updated, the inspection list is re-uploaded to the Handheld device and a re-inspection takes place. Defect Inspector on the Handheld device can be set to show only items requiring re-inspection, simplifying the process greatly for the inspector.

Defect Inspector

Information Management Solutions for the Construction Industry

Defect management at your Finger-tips

The Master Defects Register

Defect Inspector maintains both a Master Defects Register and Download History of all Inspection Results.

The Master Defects Register details the current status of all inspection results and can be used to quickly see outstanding defects relating to a particular subcontractor or inspector. .

Defect No.	Building	Area	Location	Room	Item	SubItem	Defect	Passed	Claimed as Fixed	Completed (Checked)	Notes	Orient	Position	Responsible Company	Batch
1	Park Street	Level1	Apartment104	Study	Walls	Brick		Yes	///	<input checked="" type="checkbox"/>		N/A	N/A		1
2	Park Street	Level1	Apartment104	Study	Door	Door Frame	Cracked Wood	No	///	<input type="checkbox"/>		N/A	N/A	HOUSTON	2
3	Park Street	Level1	Apartment104	Study	Door	Door Frame	Cracked Wood	No	///	<input type="checkbox"/>		N/A	N/A	EPS	2
4	Park Street	Level1	Apartment104	Study	Walls	Plaster		Yes	///	<input checked="" type="checkbox"/>		N/A	N/A		1
5	Park Street	Level1	Apartment104	Study	Ceiling	Light fitting	Damaged	No	///	<input type="checkbox"/>		N/A	N/A	EPS	1
6	Park Street	Level2	Apartment203	Bedroom4	Walls	Plaster		Yes	///	<input checked="" type="checkbox"/>		N/A	N/A		3
7	Park Street	Level2	Apartment203	Bedroom4	Walls	Brick		Yes	///	<input checked="" type="checkbox"/>		N/A	N/A		3
8	Park Street	Level2	Apartment203	Bedroom4	Ceiling	Plaster		Yes	///	<input checked="" type="checkbox"/>		N/A	N/A		3
9	Park Street	Level2	Apartment203	Bedroom4	Ceiling	Light fitting		Yes	///	<input checked="" type="checkbox"/>		N/A	N/A		3
10	Park Street	Level2	Apartment203	Bedroom4	Door	Door Frame	Cracked Wood	No	///	<input type="checkbox"/>		N/A	N/A	EPS	3
11	Park Street	Level2	Apartment203	Bedroom4	Door	Door Architrave		Yes	///	<input checked="" type="checkbox"/>		N/A	N/A		3

Defect Inspector supports the management of inspection results from multiple companies on the same project. For example the Client, the Architect and the Prime Contractor may all carry out inspections with different results.

The Master Defects Register is updated automatically as inspection results are downloaded by inspectors from their Handheld devices. Inspection results can also be imported directly from Microsoft Excel.

The Master Defects Register also supports direct entry of defects for inspectors who prefer to use traditional paper based inspection lists.

Regional Office Reporting & Facilities Management

For companies wishing to report on defects at a regional or corporate level across projects, Defect Inspector includes the facility to consolidate data from individual project sites at a regional or head office and then report across projects. This includes the ability for example to report on the total outstanding commitment by region to rectify all outstanding defects.

The performance of subcontractors across projects can also be analyzed in this way.

The Facilities Management Module of Defect Inspector enables contractors to manage defects post project practical completion that are reported by customers. This includes the ability to:

- Define customer locations (e.g. Apartment numbers).
- Assign Owner, Tenant and Agent details to locations.
- Record Issues (defects) reported.
- Capture all communications relating to issues.
- Report on forecast costs of post practical completion defects.

System Requirements

To use Defect Inspector on the Office PC requires:

- IBM Compatible PC with Pentium processor (800 MHz or above recommended).
- 512 MB Ram
- Windows 2000, XP, Vista or 7

Following are some of the Hand-held devices on which Defect Inspector is supported:

- Tablet PCs running Windows 7 (Recommended)
- iPhone/Android/Windows Phone mobile devices with an active internet connection
- iPad/Android based Tablet PC devices with an active internet connection

For more information contact:

Suppliers of Management Tools for Engineering and Construction Projects, used on over 58,000 projects over the last 16 years.

21 Bedford Street
North Melbourne
VIC 3051, Australia

Phone: +613 8379 0000
sales@qa-software.com
www.qa-software.com